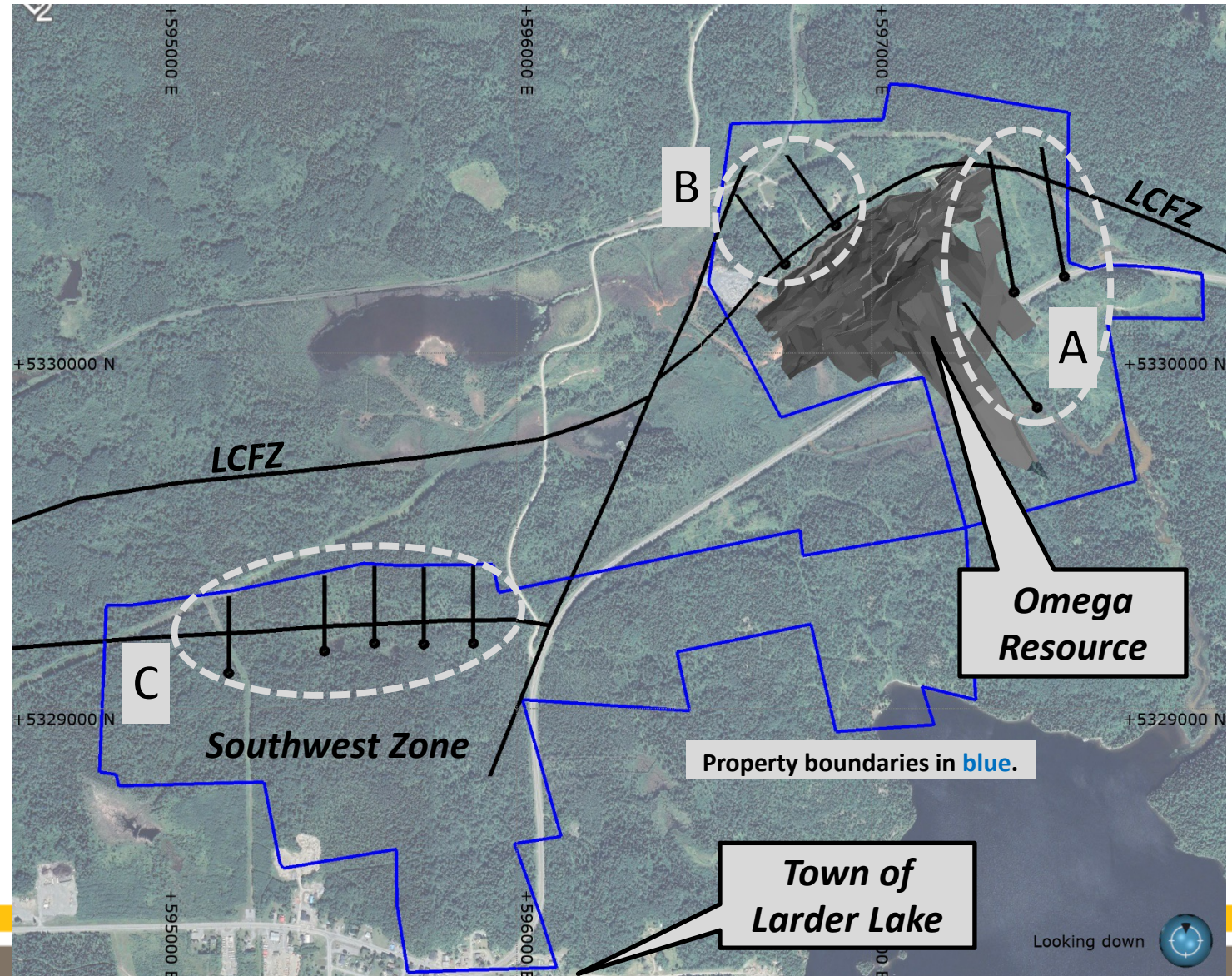


# OMEGA – Phase 1 Drill Plan with Satellite Imagery

- The Omega Mine is easily accessed by all-year roads and is situated 2 km to the Northeast of the Town of Larder Lake.
- The existing NI43-101 compliant Resource dates from 2013 and includes :
  - 219.8 Koz Indicated Au
  - 365.4 Koz Inferred Au
- Phase 1 consists of 5,200 meters of diamond drilling representing 10 drill holes that are designed to explore 3 target zones labeled A, B and C (indicated by dashed ovals).
- The Phase 1 drill holes are shown projected onto the topographic surface in the accompanying maps.
- The target zones are discussed on the following slide.





# OMEGA – Phase 1 Drill Plan with Magnetic Anomalies

- Structures are shown as black traces and are recent interpretations based on historical geological maps, aeromagnetic map products and historical drilling.
- LCFZ is the Larder Cadillac Fault Zone.
- **Target Zone A** includes 3 drill holes designed to explore the potential for resource expansion at the Omega Mine.
- **Target Zone B** includes 2 drill holes designed to explore an untested magnetic anomaly situated within the footwall of the LCFZ.
- **Target Zone C** includes 5 drill holes designed to explore volcanic and sedimentary rocks where they are cut by syenitic intrusive rocks and deformed by an interpreted LCFZ-parallel structure.

